

inches 1 2 3 4 5 6 7 8  
cm 1 2 3 4 5 6 7 8 9 10 11 12 13 14 15 16 17 18 19

# Kodak Color Control Patches

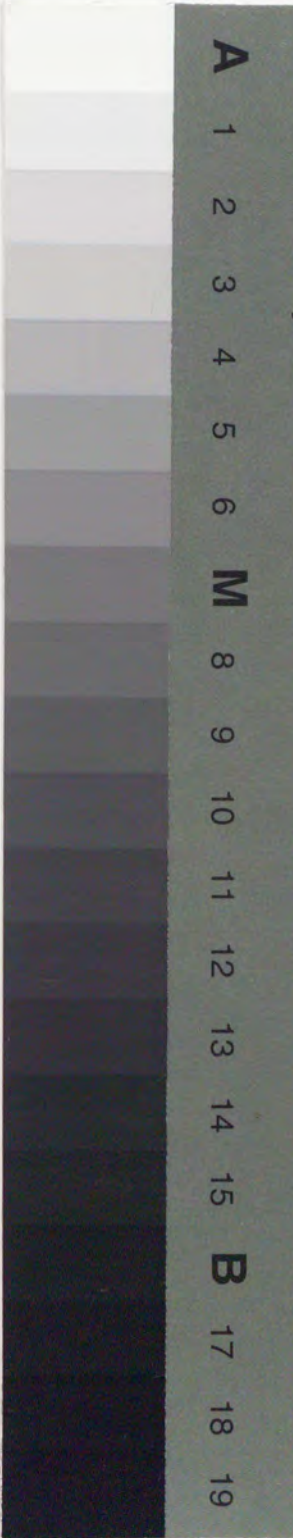
© Kodak, 2007 TM: Kodak



# Kodak Gray Scale



© Kodak, 2007 TM: Kodak



2 3 4 5 6 7 8 9 70 1 2 3 4 5 6 7 8 9 80 1 2



書目録

日本ノ事方ハ所名等々モ  
ハラシク記シテ置キ  
石印ノ本ナリ







|       |       |
|-------|-------|
| 囀     | 色     |
| 富南千太郎 | 芳村孝次郎 |
| 松永平三郎 | 岸田兼太郎 |
| 松永平三郎 | 松永兼太郎 |
| 岸田兼太郎 | 松永兼太郎 |
| 三味線   | 三味線   |
| 俵屋五郎  | 俵屋三郎  |
| 文侍田由  | 文侍田由  |
| 吉田百次郎 | 吉田百次郎 |
| 福永百次郎 | 福永百次郎 |
| 福永百次郎 | 福永百次郎 |
| 福永百次郎 | 福永百次郎 |
| 正     | 正     |
| 板元    | 板元    |

線平布引



狂言 福助  
 此の狂言は 此の狂言は



歌磨車

芳村市山七千郎



Handwritten text in a cursive script, likely a historical document or manuscript. The text is written in a dark ink on aged, yellowish paper. It consists of approximately 12 lines of text, with some characters appearing to be stylized or possibly representing a specific dialect or language. The script is dense and fills most of the page.

Handwritten text in a cursive script, continuing from the previous page. The text is written in a dark ink on aged, yellowish paper. It consists of approximately 12 lines of text, with some characters appearing to be stylized or possibly representing a specific dialect or language. The script is dense and fills most of the page.

Handwritten text in a cursive script, likely a form of shorthand or a specific dialect. The text is written in black ink on aged, yellowish paper. It consists of approximately 12 lines of text, with some characters appearing to be stylized or abbreviated. There are some faint markings above certain characters, possibly indicating pronunciation or specific grammatical functions.

Handwritten text in a cursive script, continuing from the previous page. It includes a section header in the middle that reads "女事" (Women's Affairs). The text is written in black ink on aged, yellowish paper. There are some faint markings above certain characters, possibly indicating pronunciation or specific grammatical functions.

Handwritten text in a cursive script, continuing from the previous page. It includes a section header in the middle that reads "女事" (Women's Affairs). The text is written in black ink on aged, yellowish paper. There are some faint markings above certain characters, possibly indicating pronunciation or specific grammatical functions.

Handwritten text in a cursive script, likely a medieval manuscript. The text is written in a dark ink on aged, slightly stained paper. It begins with a large initial letter, possibly 'S' or 'S', followed by several lines of text. There are some faint markings and possibly a small symbol or mark above the first line.

Handwritten text, possibly a section header or a specific note, written in a cursive script. It appears to be a single line or a short phrase, possibly starting with a large initial letter.

Handwritten text in a cursive script, continuing the text from the previous page. The text is written in a dark ink on aged, slightly stained paper. It begins with a large initial letter, possibly 'S' or 'S', followed by several lines of text. There are some faint markings and possibly a small symbol or mark above the first line.

Handwritten text, possibly a section header or a specific note, written in a cursive script. It appears to be a single line or a short phrase, possibly starting with a large initial letter.

Handwritten text in a cursive script, continuing the text from the previous page. The text is written in a dark ink on aged, slightly stained paper. It begins with a large initial letter, possibly 'S' or 'S', followed by several lines of text. There are some faint markings and possibly a small symbol or mark above the first line.



Handwritten text in a cursive script, likely a religious or historical document. The text is written in a dark ink on aged, yellowed paper.

石塔

Handwritten text in a cursive script, continuing from the first line. The text is written in a dark ink on aged, yellowed paper.

7

Handwritten text in a cursive script, continuing from the first line. The text is written in a dark ink on aged, yellowed paper.

Handwritten text in a cursive script, likely a historical document or manuscript. The text is written in a dark ink on aged, slightly yellowed paper. It consists of approximately 12 lines of text, with some characters appearing to be stylized or possibly representing a specific dialect or language. The script is dense and fills most of the page.

Handwritten text in a cursive script, similar to the left page. This page also contains approximately 12 lines of text. The ink is dark, and the paper shows signs of age. The script is consistent with the left page, suggesting a continuous document or a similar style of writing. There are some small marks and variations in line spacing throughout the text.

