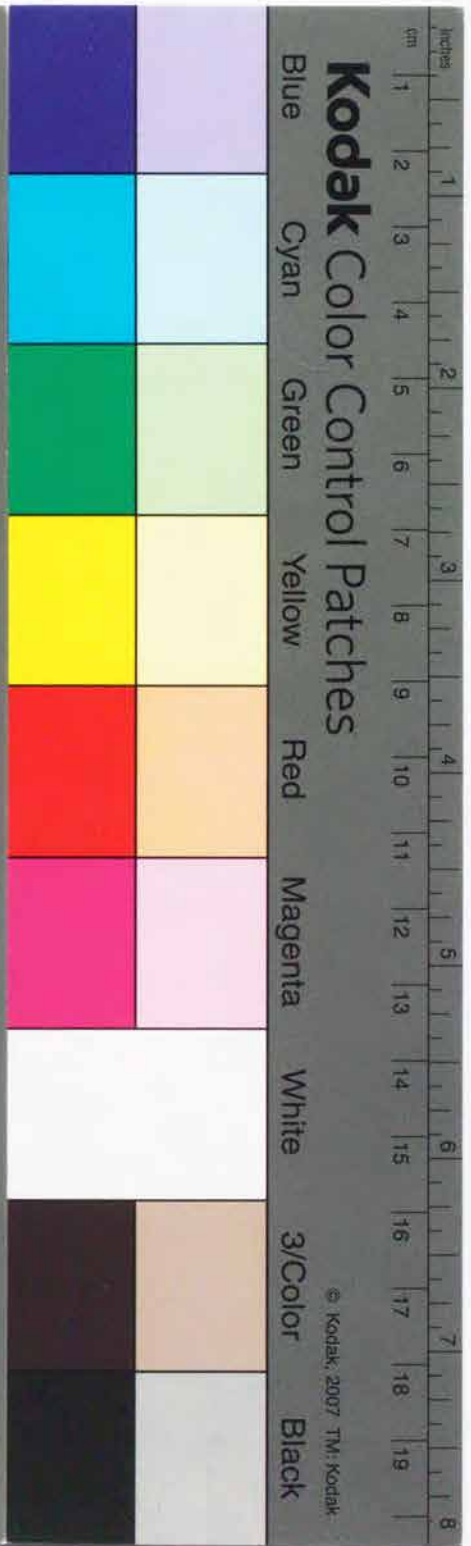


Kodak Color Control Patches

Blue Cyan Green Yellow Red Magenta White 3/Color Black

© Kodak, 2007 TM, Kodak



Kodak Gray Scale

GYM

© Kodak, 2007 TM, Kodak

A 1 2 3 4 5 6 M 8 9 10 11 12 13 14 15 B 17 18 19



寅正月

角之芝居座本市川團治郎

西村板







Handwritten text in the top right corner, likely bleed-through from the reverse side of the page.

Main body of handwritten text, organized into several columns. The text is dense and appears to be a form or a detailed record.

Vertical text on the left side of the main text block, possibly a title or a specific label.



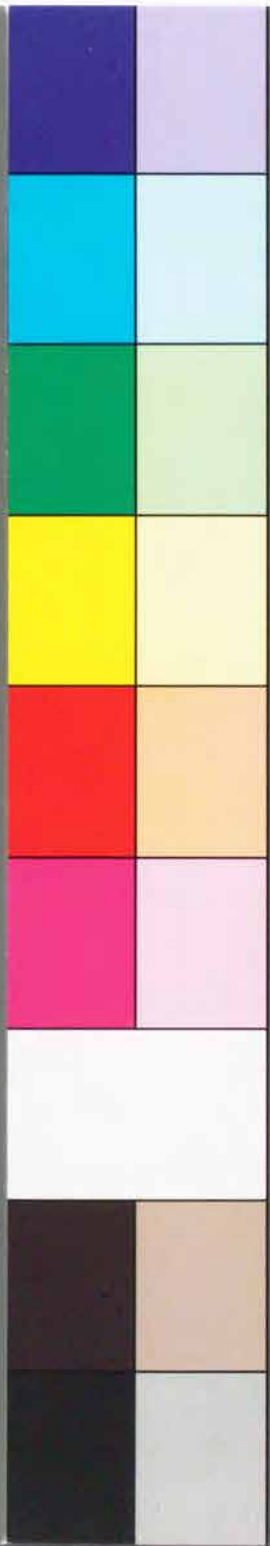
Large, stylized handwritten characters on the left side of the page, possibly a signature or a specific title.

Vertical text at the bottom left of the page, possibly a date or a reference number.



Kodak Color Control Patches

Blue Cyan Green Yellow Red Magenta White 3/Color Black



Kodak Gray Scale

A 1 2 3 4 5 6 M 8 9 10 11 12 13 14 15 B 17 18 19



© Kodak, 2007 TM, Kodak

角の芝居 庄本 中村梅丸

西村板

月二丑





大津

大津

大津

大津

大津

大津

大津

大津

大津

大津

大津

大津

大津

大津

大津

大津

大津

大津

大津

大津

大津

大津

大津

大津

大津

大津

大津

大津

大津

大津

大津

大津

大津

大津

大津

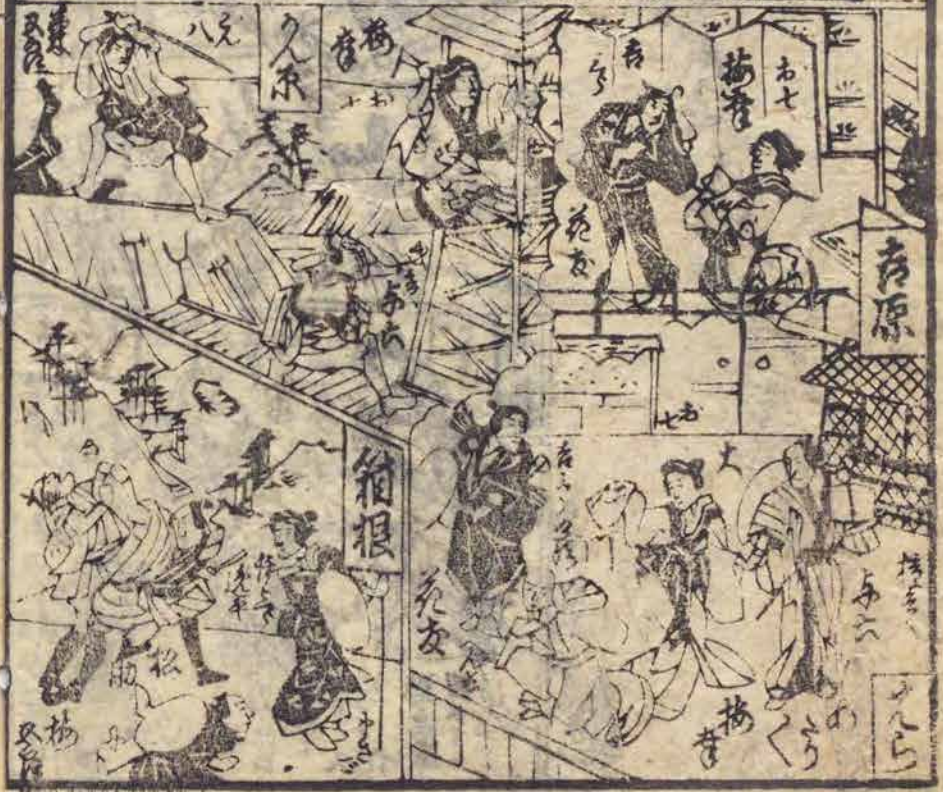
大津

大津

大津

大津

大津



五三片... 道頓堀南の... 長...

内系屋敷

本中村梅屋

梅屋土庫

東街道 百余里

梅屋土庫の... 本中村梅屋の... 東街道... 百余里...

根ノ井... 又天... 梅屋土庫の... 本中村梅屋の... 東街道... 百余里...

田... 梅屋土庫の... 本中村梅屋の... 東街道... 百余里...

梅屋土庫の... 本中村梅屋の... 東街道... 百余里...

梅屋土庫の... 本中村梅屋の... 東街道... 百余里...

東海... 中村... 横濱... 徳島... 高松... 松山... 坂井... 津島... 桑名... 志摩... 美濃... 尾張... 越前... 加賀... 石川... 富山... 福井... 滋賀... 京都... 大阪... 和歌山... 奈良... 徳島... 香川... 高松... 愛媛... 高知... 福岡... 佐賀... 長門... 肥前... 肥後... 豊前... 豊後... 大分... 宮崎... 鹿児島... 沖縄...

徳島縣志

東街道 百余里

亦... 有... 徳島縣志... 卷之...

根... 又... 徳島縣志... 卷之...

徳島縣志... 卷之... 徳島縣志... 卷之...

徳島縣志... 卷之... 徳島縣志... 卷之...

徳島縣志... 卷之... 徳島縣志... 卷之...

清元... 徳島縣志... 卷之...

Vertical columns of handwritten text, likely bleed-through from the reverse side of the page.

東洋女子行

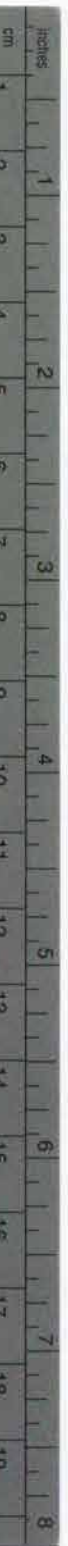
百餘里
東洋行

Vertical text on the left side of the page, possibly a subtitle or address.



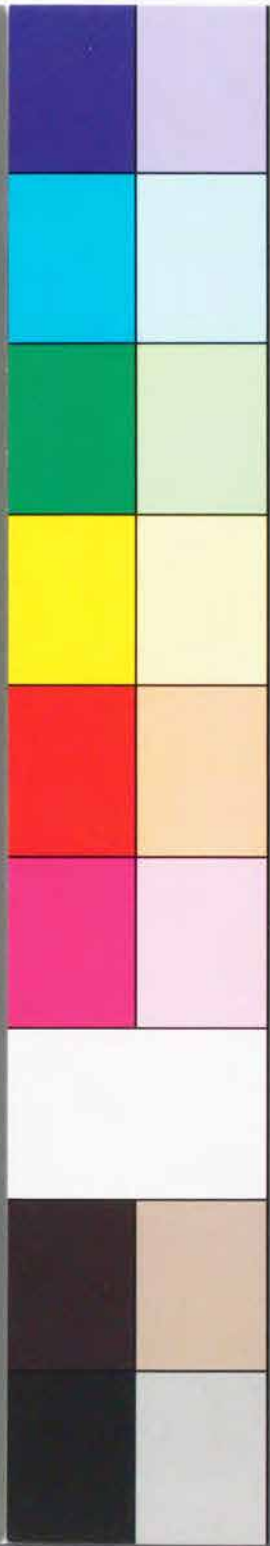
Vertical text on the far left edge of the page.

Vertical text at the bottom of the page, possibly a signature or date.



Kodak Color Control Patches

Blue Cyan Green Yellow Red Magenta White 3/Color Black



Kodak Gray Scale

A 1 2 3 4 5 6 M 8 9 10 11 12 13 14 15 B 17 18 19



© Kodak, 2007 TM: Kodak



七四

鐘輪山金五



浪 卒 清 板

天 康

滿

宮 菜

御 供 種

全

中 村 富 助





後集五馬金



丑四月... 乃... 頃... 頃... 頃...



座本 中村 富山 助

前狂言 天満官堂 権御供

後狂言 男作五馬金 出立屋の辰

Multiple columns of small, dense handwritten text, likely a list of names or a detailed record. The text is written in a cursive style and is difficult to read due to its size and density.

後狂言

男作玉馬金

出立の辰

Handwritten Japanese text, likely a list of names or characters, including terms like 狂言 (Kyogen), 女 (Onna), and 男 (Otoko).

Handwritten Japanese text, possibly a list of names, including terms like 女 (Onna), 男 (Otoko), and 子 (Sho).

Handwritten Japanese text, possibly a list of names, including terms like 女 (Onna), 男 (Otoko), and 子 (Sho).

Handwritten Japanese text, possibly a list of names, including terms like 女 (Onna), 男 (Otoko), and 子 (Sho).

切狂言

女霧座町文章

中村富太郎

頭

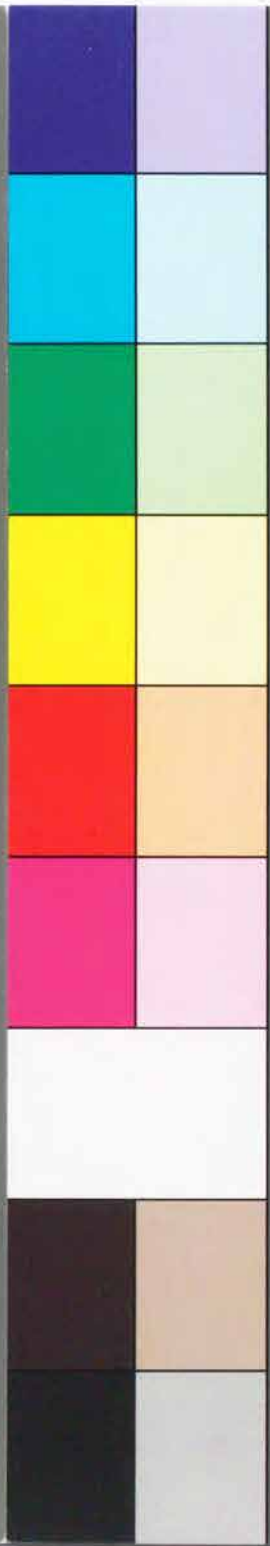
千...

川市子

1 2 3 4 5 6 7 8 9 10 11 12 13 14 15 16 17 18 19

Kodak Color Control Patches

Blue Cyan Green Yellow Red Magenta White 3/Color Black



Kodak Gray Scale

A 1 2 3 4 5 6 M 8 9 10 11 12 13 14 15 B 17 18 19



© Kodak, 2007 TM: Kodak

1 2 3 4 5 6 7 8 9 120 1 2 3 4 5 6 7 8 9 130 1

寅八月

新菊形子の帯地



中居 芝居

座本 市團節

盆 智

浪花本清枝

大江 全 山

世の大江山



世の大江山



大心山



寶八月... 寶八月... 寶八月...

內業志板

前狂香 以世成大江山 全部七冊

功徑香 菊製... 別深三友

Multiple columns of vertical text, likely a preface or detailed description, written in a dense, cursive hand. The text is arranged in several columns across the page, with some characters appearing to be in seal script or a highly stylized form.

前狂言 けいせき大江山 全部七冊

初狂言 菊利影草 別添三五

Handwritten text in the upper section, including names like 香保子 (Kaori), 保子 (Kaori), and various characters in a dense, vertical arrangement.

Handwritten text in the lower section, including names like 清元 (Kiyomoto) and 清元依之助 (Kiyomoto Yonosuke), along with other characters.

Vertical text on the left side of the upper section, possibly a title or publisher information.

Vertical text on the left side of the lower section, including the name 清元 (Kiyomoto) and other characters.

Handwritten notes in vertical columns, likely commentary or a list of items.

Second section of handwritten notes, appearing as a dense block of characters.

Third section of handwritten notes, continuing the vertical text.

Fourth section of handwritten notes, located at the bottom of the page.

Large vertical characters, possibly a title or a list of items, including characters like 大, 小, 中, 上, 下.

Vertical text on the left side of the page, possibly a page number or a reference.

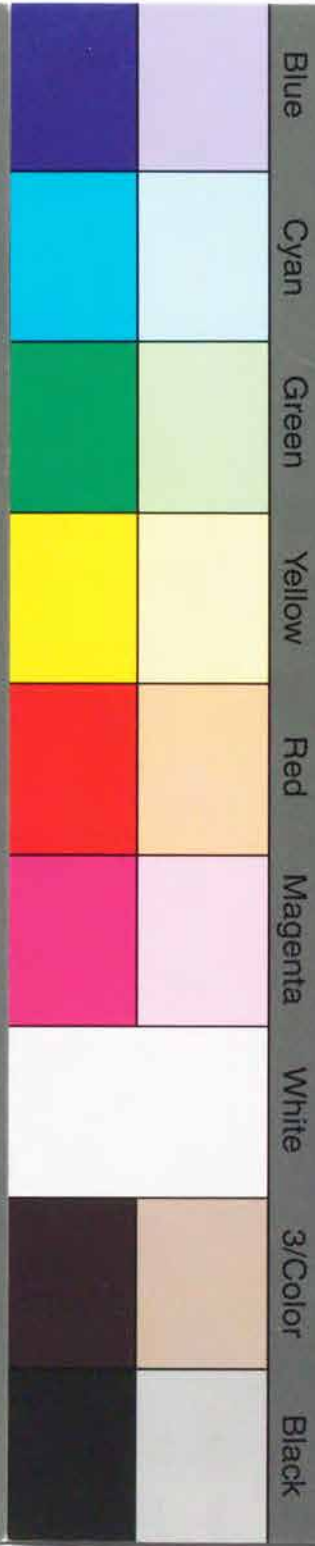
Vertical text at the bottom left, possibly a signature or a date.

Text in the center-left margin, possibly a title or a section header.

1 2 3 4 5 6 7 8 9 10 11 12 13 14 15 16 17 18 19
inches
1 2 3 4 5 6 7 8 9 10 11 12 13 14 15 16 17 18 19
cm

Kodak Color Control Patches

© Kodak, 2007 TM: Kodak



Kodak Gray Scale

C **Y** **M**

© Kodak, 2007 TM: Kodak

A 1 2 3 4 5 6 M 8 9 10 11 12 13 14 15 B 17 18 19

1 2 3 4 5 6 7 8 9 120 1 2 3 4 5 6 7 8 9 130 1

中定之若



浪花本清歌

歌

清

水

全





藥水
藥水
藥水
藥水

藥水
藥水
藥水
藥水

香
香
香
香

此藥水能治一切瘡毒
凡患此症者宜早服之
其效如神不可不備
每瓶售銀二角

此藥水能治一切瘡毒
凡患此症者宜早服之
其效如神不可不備
每瓶售銀二角

此藥水能治一切瘡毒
凡患此症者宜早服之
其效如神不可不備
每瓶售銀二角

此藥水能治一切瘡毒
凡患此症者宜早服之
其效如神不可不備
每瓶售銀二角